

MUHEZA DISTRICT

Introduction

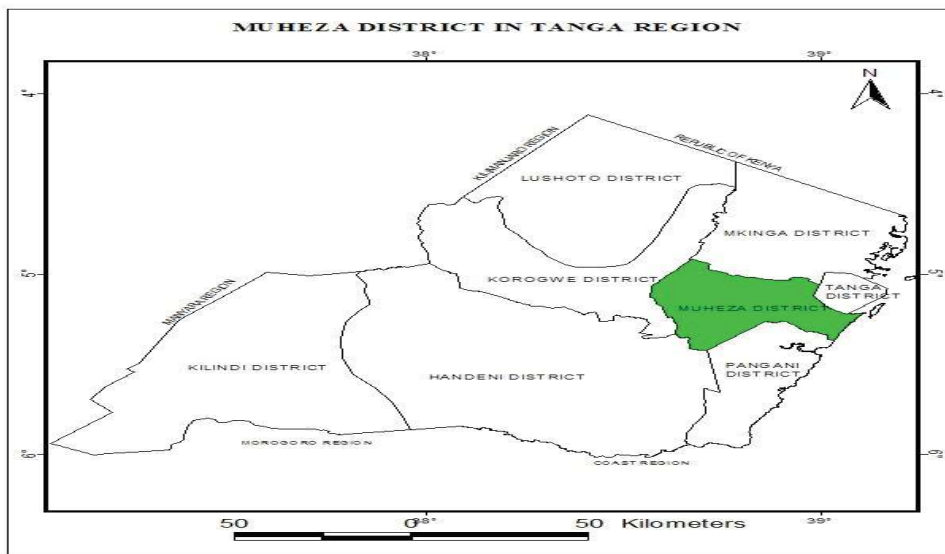
Muheza is one among eight Districts of Tanga Region, it has total area of 1,974 square kilometers and population of 204,461 people (2012 census), and it is divided administratively into 4 divisions, 33 Wards and 135 Villages.

Location and climate

Muheza District is located in north-east Tanzania, bordering Tanga City on the North East, Mkinga on the North, Pangani in the South and Korogwe District in the West.

The climates range from hot and humid in the Coastal plains to temperate in the mountains. December to March is usually hot with temperatures of around 30° C. During May to October temperatures fall to about 24° C to 28° C. Nights become much cooler in the Usambara Mountains and both its highlands and foothills have variable local conditions dictated by their altitude and exposure to the sun and the prevailing winds from the Indian Ocean.

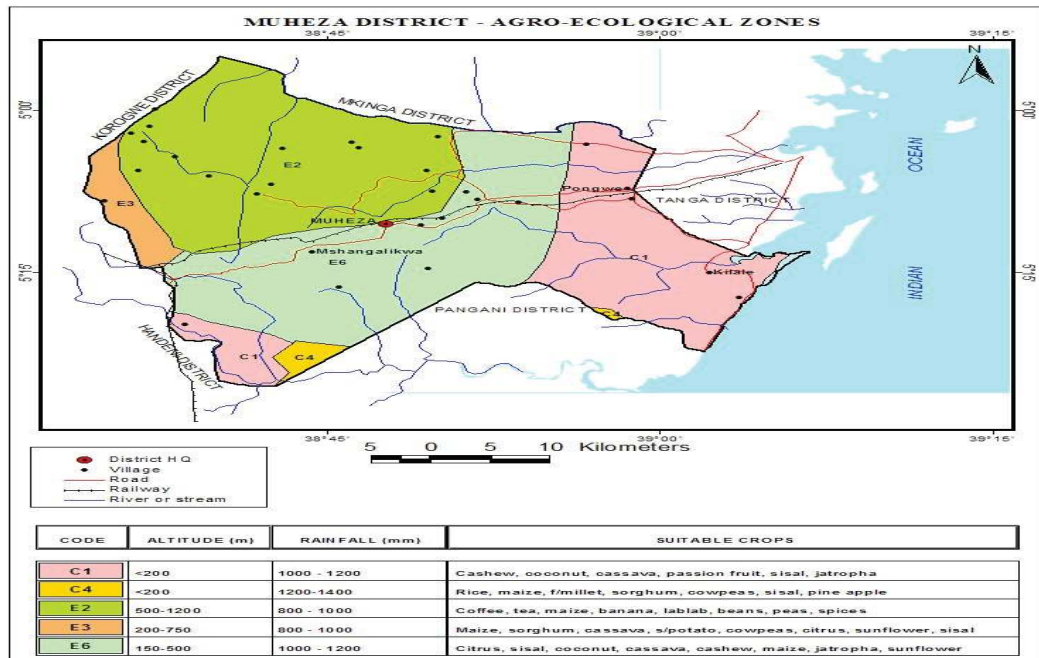
Air masses from the Indian Ocean are the main source of rainfall. The coast generally receives between 1,100mm and 1,400mm of rain fall a year, two rain seasons the long rains (**masika**) from February to May; and short rains (**vuli**) from October to December.



2.1 Agro – Ecological Zones

Muheza District has marked spatial differences in rainfall amount and temporal pattern, geology, landform and soil type. It can be divided into 5 District agro ecological zones with different land use potentials and cropping possibilities (Map 2 – C1, C4, E2, E3 and E6). Most of the zones have two rainfall seasons with sufficient length allowing growth of variety of crops. Consequently most settlement is concentrated in such zones. These include the coastal plains with the potential for earning a livelihood from fishing on the Indian Ocean shoreline and the

upland and foothills of the Eastern Usambara Mountains. The drainage systems of this District consisting of the Pangani, Zigi and Mkulumuzi rivers flow into the Indian Ocean and dissect the lowlands.



Zone C1: Lies East and South of District below 200m, this zone receives rains 1000mm – 1200mm. It has two growing season: from March to June and September to December. There is low soil fertility, low water holding capacity and low altitude below 200 meters. Main crops grown are cassava, jatropha, sweet potatoes, cashew nuts, pineapples, citrus, passion fruits, sisal and coconuts.

Zone C4: Lies East and South of the District below 200m. Get rain between 1200mm – 1400mm twice a year. The growing seasons are from March to June and October to December. Soil type is low soil fertility, medium water holding capacity and low altitude. Main crops in this zone are Maize, Rice, Millet, Sorghum, Cow peas, pineapple, groundnuts, sisal, citrus, sunflower.

Zone E2: It lies northwest of District 500m – 1000m above the Sea level. Rains are between 800mm – 1000mm twice a year and the growing seasons from February to June heavy rains and from October to December light rains. The soil is Medium soil fertility, high water holding capacity and high altitude. Main crops in this zone are Maize, Arabica Coffee, Tea, Cocoa, Round potatoes, Bananas, Pyrethrum, Beans and Spices (cloves, cardamom, cinnamon, black popper, ginger).

Zone E3: Located 200 – 750m west of District, rainfall is 500mm – 1000mm once a year from November to April. The soil is Medium soil fertility, high water holding capacity, medium

altitude; Crops grown are Maize, sorghum, cassava, coffee, tea, sweet potatoes, cowpeas, citrus, sunflower and sisal.

Zone E6: Located 150 – 500m North and Central part of District, rainfall is 100mm – 1200mm, the growing seasons from March to May. The soil is moderate to low soil fertility and low to medium water holding capacity. Grown crops are Millet, citrus, coconut, cassava, cashew nuts, maize jatropa and sunflower.

Reasons to invest in Muheza District

The District has a relatively well developed agricultural base of intensive small holder production of food crops and estate production of cash crops like sisal and tea for export. It has economic advantages from its location on the transport, communications and power supply corridor linking the District to Tanga City and other urban centers in coastal and northern Tanzania. The District is rich in natural resources from its mountain, coastal and marine habitats. The people of Muheza have industriously used their resources to provide food, fuel and other raw materials to neighboring districts and regions as well. The natural resource and location advantages need to be put in use for poverty alleviation and fostering socioeconomic development of a growing population. Appropriate investments are necessary to achieve economic growth, improve household incomes and the well being of people.

Investment opportunities

1.0 Agro-processing Industries

1.1 Establishment of spice processing plants

Proposed Products	Establishment of spice processing plants
Potential	10Ha Available at Chartur Estate Kibanda Ward (Lot Na. 12329, CT 9059 to be resurveyed
Target areas/ Locations	Production of spices is 1,228 tons per annum that is Cloves 77 tons, Cardamom 756 tons, Cinnamon 106 tons, Black pepper 229 tons and Ginger 60 tons.
Energy and Transportation	Accessible by railway lines which connected to the central line, it is also connected to the rest of East Africa through high ways
	Presence of Indian Ocean which can facilitate sea transport approx 35km from Tanga Port. Electricity from the national grid is available

1.2 Establishment of fruit processing unit

Proposed Products	Establishment of fruit processing unit
Potential	11Ha available land at Chartur Estate Kibanda Ward (Lot Na. 12329, CT 9059 to be re-surveyed
Target areas/ Locations	Current production is 80,000 tons per annum of citrus

Ancillary Investment	Accessible by railway lines which connected to the central line.
	The area which is connected to the rest of East African high ways
	Presence of Indian Ocean which can facilitate sea transport approx 35km from Tanga Harbour. Electricity from the national grid is available.

1.3 Transportation and Storage of goods

Proposed Products	Construction of dry Port
Potential	10 Ha Available at Chartur Estate Kibanda Ward (Lot Na. 12329, CT 9059 to be re-surveyed
target areas/Locations	The area is potential for a construction of a Regional Dry Port
Transportation	Accessible by railway lines which connected to the central line. The area is connected to the rest of East African high ways. Presence of Indian Ocean which can facilitate sea transport approx 35km from Tanga Harbor.
Power/Energy	Electricity from the national grid is available